



ABOUT WBAS

Walvis Bay Airport Services (WBAS) was established in 1998 to provide ground handling support to aircraft making use of the Walvis Bay Airport.

Ramp Handling

Well-maintained ramp handling equipment ensures the smooth transfer of passengers, crew, baggage and cargo. The WBAS staff undergo regular safety, ramp and baggage handling training to ensure that they are well acquainted with the international airport ground handling standards and procedures.

Passenger Services

To ensure that passengers are well taken care of, WBAS also assist with check – ins, Customs and Immigration, baggage handling and arranging shuttle services and accommodation.

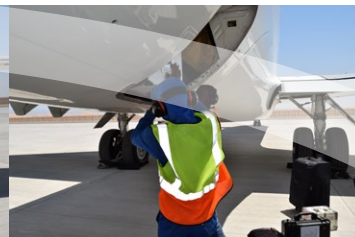
Certification

WBAS also provides parking space in its hangar and has extensive experience in handling various types and sizes of aircraft spanning commercial, passenger, freight, military to research aircraft.



WBAS is CAT 4,5,6,8 & 9 certified by IATA to handle dangerous goods. As part of an ISO 9001 accredited group of companies, WBAS ensures strict control over document flow and regular feedback to customers.

AT WBAS, we firmly believe in providing prompt, quality and hassle-free services consistently. For a free quote or more information please don't hesitate to contact us.



OUR SERVICES

underwing

- Attendance / Chocking
- Water & Toilet Service
- Ground Power
- Air Starter
- Boarding Stairs
- Towing, hangar storage

overwing

- Filing Flightplans

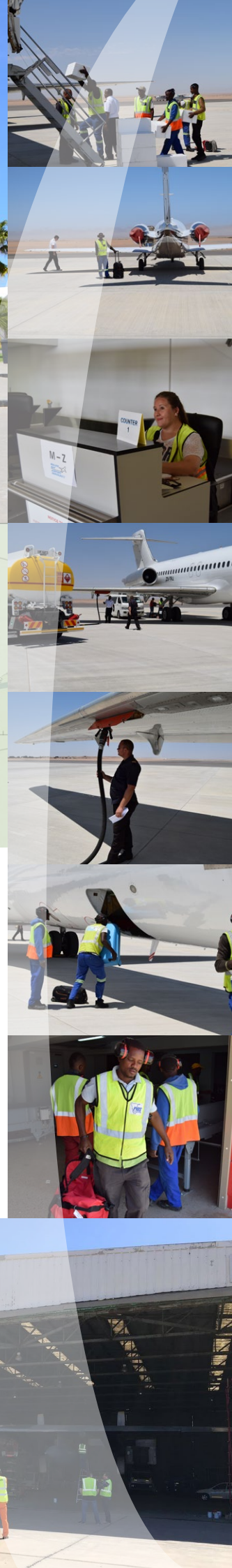
equipment

- Air Starter Unit
- Ground Power Unit
- High Loader
- Mobile Steps
- Tractor

meet & assist / CIQ

- Ramp transportation for Passengers
- Baggage Handling
- Aircraft Cleaning
- Shuttle Services
- Catering
- Hotel Bookings

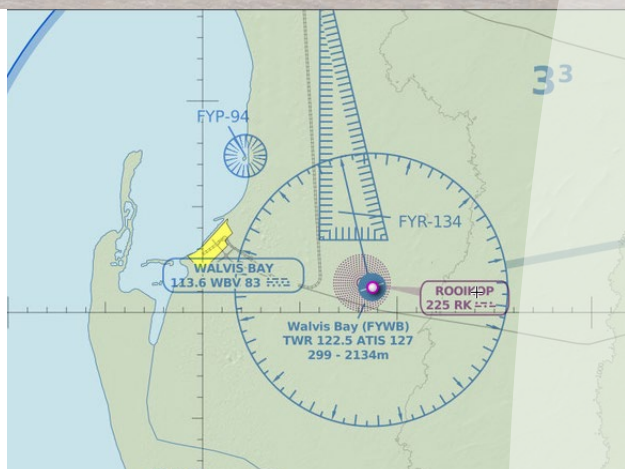




THE AIRPORT

The Walvis Bay Airport is a second major airport in Namibia and is strategically located in the dunes of the Namib Desert about 15km from the port city of Walvis Bay. The Airport provides easy and timely access to the Namibian coastline whether for business, leisure or adventure tourism.

The terminal buildings and runway have recently been upgraded. The runway is now 3,400m long and 60m wide. Handling more than 20,000 aircraft and a massive 98,178 passengers in 2015, the airport operates daily flights to Windhoek, Johannesburg and Cape Town. The Walvis Bay Airport is primed to become a leader in cargo handling for marine, coastal and mining activities in the area. Major developments at the airport are setting up to become Namibia's second international airport during 2016.



THE AIP

airport

- Type: Public
- IATA code: WVB
- ICAO code: FYWB

operating hours

- Summer: 0600-1500 UTC Mon-Sun
- Winter: 0700-1600 UTC Mon-Sun
- No take-offs or landings are allowed outside operating hours.

radio frequency

- APP: 122.5 MHz
- TWR: 122.5 MHz

runway

- CAT3 Asphalt surface
- Length: 3,400 m
- Width: 60m
- Fire Fighting CAT6
- No night flood lights

location

- Lat: -22.979900 ■ 22 58.794022 S
- S22 58 47
- Long: 14.645300 ■ 14 38.717995 E
- E014 38 43
- Elevation AMSL: 299 ft / 91 m
- Magnetic variation: 14.289°W
- 15km east from Walvis Bay.

fuel

- Efficient supply of fuel: Jet A1 Fuel, AV Gas by Southern Energy Company.

facilities

- Airport rescue and fire fighting services
- One aircraft refuelling agent (Shell Aviation)
- Ground handler
- Restaurant / Kiosk
- Hangars
- Car rentals
- Gift shop



**Contact us today, to
find out more!**

Tel: +264 64 201 22012142
Cell: +264 81 143 8939
Email: contact@wbas.com.na

