

since  
1924



**MANICA**  
**MANICA GROUP NAMIBIA**

simplified **cargo** movement



Proudly



Bidvest



## Purpose

*Simplified Cargo Movement*

## Vision

*A future focused, agile, reliable cargo specialist.*

## Values

**ME:** *As individuals, we are committed, reliable, and professional.*

**WE:** *In collaboration, we are respectful, appreciative, and fair.*

**US:** *For our stakeholders, we are results-driven, quality conscious and transparent.*

## Accreditations & Memberships



## *Simplified Logistics*

Since its establishment in 1924, Manica has been at the forefront of creating innovative and integrated logistics and marine service solutions for companies doing business to and from Africa.

With a well-established international network of logistics partners, Manica is able to offer “global solutions” to local and international customers. The company is made up of a diverse group of subsidiaries

and divisions providing expert logistics services including clearing and forwarding, ships’ agency, cargo-handling, warehousing, intermodal transport, project-freight, airport ground-handling, shipping, industrial lubricants, bunkering and shore-based logistics support for the oil and gas industry. Our competitive advantage lies in our unique position to ‘bundle’ these diverse services into a simplified “one-stop-shop” solution for any type of logistics requirement. Manica is known for its flexibility and agility in harnessing these services, its staff and facilities to provide custom logistics solutions that are cost and time effective.

Our prominent position in the industry is reflected in our strong operating performance and growing pool of skilled people who are passionate about everything logistics. We embrace diversity and innovative thinking, while ensuring the highest level of safety and quality management.

We take pride in the fact that we can move any cargo from anywhere in the world to your door-step without you having to worry about hidden costs and the everyday frustration of empty promises and unnecessary delays. With Manica at the helm of your off- and onshore logistics management and support requirements, you can sit back with the assurance that we will deliver – anything, anytime, anywhere.

We stand ready to assist you.

**Ralph Ruiters**  
**Managing Director**



# History



Our offices in 1928

**1 October 1924**

Maertins & Woker is established as a Trust with shares in Sturrock (SWA).

**6 August 1941**

Mann George & Co (SWA) takes over operations of Mann George & Co. (SA).

**14 December 1945**

Sturrock (SWA) is incorporated.

**22 October 1954**

Sturrock changes its name to Sturrock & Woker and later to Dart & Howes (SWA).

**9 July 1964**

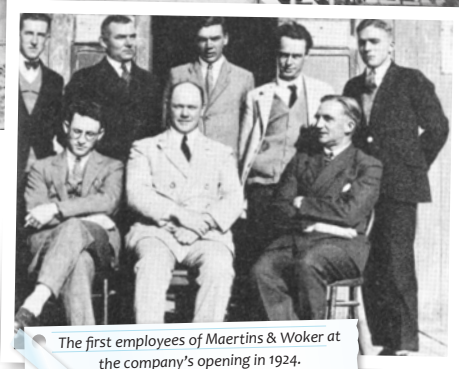
Mann George & Co (SWA) changes its name to Cory Mann George (SWA).

**1 July 1968**

The Woker Trust acquires two-thirds of the share holding in Sturrock.

**2 September 1970**

Cory Mann George (SWA). becomes Freight Services (SWA). Freight Services includes the SWA assets and operations of Musgrove &



The first employees of Maertins & Woker at the company's opening in 1924.

Watson and the South African Stevedores Services Company.

**27 April 1976**

Freight Services (SWA) turns into W.Woker Freight Services.

**21 August 1978**

Dart & Howes (SWA) turns into W.Woker Freight Services (Namibia).

**28 December 1987**

W. Woker Freight Services (Namibia) changes to Woker Freight Services.

**4 April 1995**

Woker Freight Services is restructured and changes its name to Manica Group Namibia.

### Employment

Manica Group Namibia is committed to Black Economic Empowerment (BEE) which is defined as an integrated and broad based socio-economic process aimed at redressing the imbalances of the past. During 2002 the first Manica Group's Affirmative Action Plan was approved by the Employment Equity Commissioner.

In the same year, the Manica Group received an award for progress and dedication to the principles of the Affirmative Action Act after the final progress report was approved by the Employment Equity Commissioner.

### Talent Development

Manica places high importance on skills development for its employees. A special training centre was established to provide business skills training to staff and the local community. Other training includes safety, customer care and leadership development. Staff members also have access to tertiary study aid.

Manica supports the **CATS programme** that focuses on internship placements for on-the-job skills development. Many of these students have been appointed at Manica after their internships.

## People



# 1060

Highly qualified employees. 302 permanent.  
90% from previously disadvantaged backgrounds.



12% Women  
30% in Management  
positions



88% Men  
70% in Management  
positions

## Experience



# +98

Opened our doors in 1924  
and still going strong!

## Equipment



# +500

Wide variety of lifting and transport equipment, truck, forklifts, launches, cranes, reach stackers, hopper etc

## Facilities



# 150,000<sup>m</sup>²

Secure underroof, open-air, general and bonded storage facilities for any type of cargo.





## Safety and Quality Management

Manica Group Namibia is ISO 9001 and ISO 45001 certified. It also has various policies in place on Ethics, Procurement, Safety, Anti-Corruption. Manica values its employees as the most valuable asset, and therefore is committed to ensure the highest standards in OHSE. Manica ensures:

- A healthy and safe working environment.
- All employees are kept fully aware of their responsibilities and accountabilities.
- Regular safety training is provided to staff.
- Dedicated safety monitors and officers are appointed.
- Safety policies and work procedures and manuals in place.
- Comply with national OHSE legislation and international standards.
- Availability of safety devices, protective equipment and clothing.



## Infrastructure

The Manica head office is located in Walvis Bay close to the main port entrance. With warehousing and open storage space of more than 150,000m<sup>2</sup> close to the port, the group is well equipped to store and handle any cargo.

The company also has a hangar at the Walvis Bay airport and warehouses, open storage facilities and distribution depots in Windhoek, Tsumeb and Lüderitz.

With its experience in handling large volumes of cargo, Manica has invested considerable capital in acquiring the right cargo handling equipment. These include a large array of specialised heavy lift handling equipment, forklifts, reach-stackers, goose-neck, launches, cranes, airport ground handling equipment, trucks, side-loaders, and trailers.





## Core Services

Manica Group Namibia provides the full spectrum of logistics services for any type of industry, cargo and to any destination in the world. These services can be bundled to meet the specific needs for any freight, logistics and marine service requirements or challenges. Our core services include:

- Logistics supply chain management.
- Clearing and Forwarding.
- Cross border and project freight solutions.
- Intermodal transport solutions.
- Shipping, Imports and Exports.
- Stevedoring (cargo discharge, loading and cargo equipment rental).
- Warehousing (cargo storage and inventory control).
- Industrial and Marine Lubrication products and greasing technology.
- Airport ground handling services.
- Project management, compliance and consolidation services.
- Complete Oil & Gas logistics support.
- Ships' Agency and Chandling.
- Crew transfers, airport shuttle, Visa applications, accommodation and travel arrangements.
- Bunkering.
- Business skills training and facilities.
- Personnel Recruitment and payroll services.
- Heavy lift equipment procurement and rental.
- Launch services to ferry goods and crew to vessels in the bay.

## Why Manica

Manica Group Namibia firmly believes that logistics services must be seamless, hassle-free and flexible to the needs of the client. Manica is able to provide integrated solutions to the most daunting logistics challenge.

- Well-established Namibian company, more than 90 years experience.
- Service flexibility and bundled services save clients considerable costs and give faster turnaround time.
- Key-account management services.
- Highly skilled staff contingent.
- Ample warehousing and storage space.
- Continuous optimisation of supply chain and material flows, costing structures.
- Proficient resources, equipment and capacity backup.
- Access to regional and international forwarding network.
- High standards through service level agreements and performance indicators.
- Shore-based inventory management.
- ISO 9001 & ISO 45001 certified, and member of various regulatory authorities.
- Progressive quality management and safety systems.
- Advanced track and trace systems.
- As part of the Bidvest Namibia group, also have access to specialised IT services, consumer goods, food and office supplies.



## Corporate Social Investment

The main focus of Manica's CSI programme is to promote community based self-employment and income generating projects, education, health, environment and youth development. The company invests 1,5% of all profits (after taxes) into community upliftment projects. Staff members also actively participate in national fund-raising events such as Breast Cancer Awareness Drives and the Winter Food and Blanket collection for senior citizens. Some of the CSI projects include:



Creation of a commercial catering kitchen at the Sunshine Centre (learning centre for the disabled). Sells meals to shift workers in local heavy and maritime industries.



Kickstarted a vegetable garden for Sunshine Centre to sell produce to local market and provide vegetables for the catering kitchen and for meals at the centre.



Converting containers into classrooms for a after-school education programme, Mondesa Youth Opportunities (MYO) in Swakopmund.



School field biology and marine field excursions.

Annual book prizes for top performers in various coastal schools.

Bursaries and educational assistance is also granted to Namibian students studying logistics.



Support to the Save-the-Rhino Trust, the Brown Hyena, Vulture and Dolphin research programmes. This comprises sponsoring the equipment used in research activities.

Regular beach cleanup and other environmental campaigns are also supported.



Setting up a complete laboratory for a school in Lüderitz.

Support to various schools with educational and sport funding.





## Project Freight

As proven in previous large scale projects, Manica's key account and one-stop-service approach ensures that all in and outbound logistics, warehousing, customs clearing, transport and freight management components are fully covered. Manica is specifically geared for large project consignment freight requirements and has extensive experience in providing logistics support for various types of project orientated industries. These sectors include:

- Mining, Energy, Water infrastructure.
- Retail and wholesalers (FMCG).
- Off-shore oil and gas exploration , turnkey developments.
- Manufacturing, construction, large scale infrastructure development.
- Fishing, agriculture, automotive.
- Medical, military, film industry, relocations.

## Cargo Types

Manica also boasts with a extensive portfolio of importing and exporting large volumes of various types of cargo. This comprises containerised goods, commodities and a fair volume of vehicles, break bulk, equipment and heavy machinery.

Other types include:

- Containerised commodities.
- Heavy mining equipment, specialised material and parts.
- Chemicals, Ore minerals (copper, zinc, iron, manganese, uranium etc.)
- Vehicles, dry and perishable food stuffs, building material.
- Raw and manufactured products (cement, granite).

- Hunting trophies, wildlife relocation.

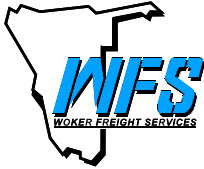
## Corridor Freight

The ports and corridors routes in Namibia are strategically positioned to give the country a competitive positioning as a transport hub for all regional and international trade between Southern African Development Community (SADC) countries, Europe, the Americas, and the rest of the world.

The Walvis Bay Corridor network consists of various dedicated "cargo highways" linking Southern African countries to the port of Walvis Bay. These highways are well maintained road and rail infrastructure that ensures the safe, hassle-free and smooth flow of cargo within the region, whether it was imported or for exported purposes. Manica handles and manages a large portion of the freight that is transhipped through the corridor routes to clients in Angola, Botswana, DRC, Malawi, South Africa, Zambia, and Zimbabwe.



# Subsidiaries & Divisions



## Walvis Bay (Head Office)

TEL +264 64 201 2027  
FAX +264 64 207 680  
EMAIL [sales@wfs.com.na](mailto:sales@wfs.com.na)

## Windhoek

TEL +264 61 267 615  
FAX +264 61 267 615  
EMAIL [sales@wfs.com.na](mailto:sales@wfs.com.na)  
WEBSITE [www.wfs.com.na](http://www.wfs.com.na)

## Woker Freight Services

- Clearing and Forwarding for all imports and exports.
- Customs clearance brokering for all services to all types of industries and cargod cargo.
- Consolidation and compliance management services.
- Intermodal Transport (road, rail, sea & air -freight).
- Freight handling, containerisation, unpacking.
- Bonded, secure and normal warehousing facilities.
- In-transit Clearances including Road Bond Facilities to Zambia, Angola, Botswana, Zimbabwe, Malawi, SA, Mozambique and the DRC.
- Door to door logistics for critical and urgent air and sea freight cargo.
- Project management, crossborder and abnormal freight.
- Cargo track-and-tracing services.
- Key account management.
- Temporary exports, material flow management and scheduled reporting for imports & exports.
- Advice on customs legislation & procedures in Namibia.
- Optimization of supply chain & material flows for inbound and outbound cargo.





TEL +264 63 207 000  
 FAX +264 63 203 163  
 EMAIL [demi.smith@lbsf.com.na](mailto:demi.smith@lbsf.com.na)  
 WEBSITE [www.lbsf.com.na](http://www.lbsf.com.na)

## Lüderitz Bay Shipping & Forwarding

- Based in the southern port of Namibia, Lüderitz.
- Clearing and Forwarding.
- Import and Exports.
- Freight handling, containerisation, warehousing
- Marine Bunkering.
- Ships' Agency service for all types of vessels, rigs, liners and non-liners.
- Lubricants and filling station.



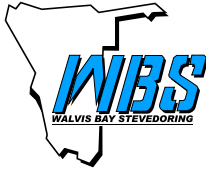
TEL +264 64 201 2101  
 FAX +264 64 215 218  
 OPERATIONS [smsops@ols.com.na](mailto:smsops@ols.com.na)  
 WEBSITE [www.ols.com.na](http://www.ols.com.na)

## Ocean Liner Services

- Complete ships' agency services.
- Husbandry services for all types of vessels, craft, tankers, rigs, liners, non-liners, trawlers etc.
- Ships supplies, parts and equipment.
- Cargo logistics, operations planning, monitoring and co-ordination with port authorities, stevedores, importers and exporters.
- Bunker supply, lubricants, waste removal, hatch cleaning and hatch sealing.
- Cargo and other marine surveys, repairs and maintenance (dry docks), shore power generators / cranes / forklifts and cartage.
- Medical assistance and supplies.
- Crew transfers, transit visas, shuttle services with meet-and-assist, accommodation.
- Specialised procurement of equipment, parts and other supplies for the marine & mining industry.
- Chanding of fresh supplies, consumables, ships' spares and other goods required in marine and related turnkey projects.







TEL +264 64 204 641  
FAX +264 64 205 798  
EMAIL [contact@wbs.com.na](mailto:contact@wbs.com.na)

## Walvis Bay Stevedoring

- Cargo loading, off-loading, stacking, containerisation and destuffing from any vessel to quay.
- All types of cargo - containerised, break-bulk, bagged, pallets, project cargo etc.
- Cargo security, storage, handling and bagging of bulk cargo.
- Equipment rental (forklifts, crane, goose-neck, hopper) + operators.
- Cargo handling services for containers, general cargo, bulk commodities, project cargo.



TEL +264 64 281 200  
EMAIL [contact@lubs.com.na](mailto:contact@lubs.com.na)  
WEBSITE [www.lubs.com.na](http://www.lubs.com.na)  
  
WINDHOEK +264 61 309 805  
LÜDERITZ +264 63 207 000

## Lubrication Specialists

- Premier accredited supplier of marine, mining, industrial and automotive lubricants in Namibia, on behalf of Exxon Mobil.
- Strategically located warehouses and depots in Windhoek, Lüderitz and Walvis Bay.
- Greasing products and technology.
- Oil spill clean-up products.
- Advice on lubricant and oil applications and grading.
- Oil sampling and analysis.

Authorised Distributor of

# Mobil™







**Rennies  
Consolidated**

TEL +264 64 201 2999

FAX +264 64 202 793

EMAIL [contact@rennies.com.na](mailto:contact@rennies.com.na)

WEBSITE [www.manica.com.na](http://www.manica.com.na)

## Rennies Consolidated

- Multi-user, under-roof and secure warehousing facilities.
- Bonded & general storage
- 105,000m<sup>2</sup> warehousing and storage space.
- Containerisation, destuffing, groupage
- Container repair and washing services.
- Consignment inventory control.
- Fitting and removal of Flexi-tanks.
- Weighbridge, mobile ramp and railway sidings.
- State-of-the-art track-and-trace systems
- Certified to handle and store dangerous goods.



**Rennies  
Transport &  
Materials Handling**

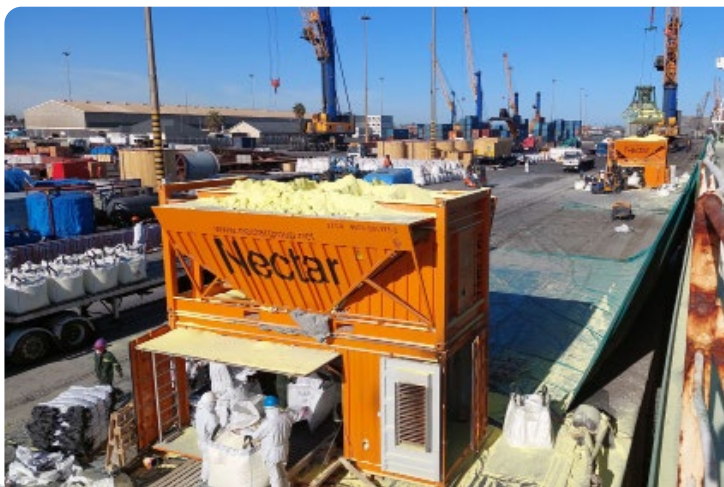
TEL +264 64 201 2182

EMAIL [transport@rennies.com.na](mailto:transport@rennies.com.na)

WEBSITE [www.manica.com.na](http://www.manica.com.na)

## Rennies Transport

- Local Transport – Containers / Break bulk within Walvis Bay , neighbouring towns and all Erongo based mines.
- National transport – Containers / Break Bulk delivered to any destination within Namibia
- Well maintained fleet of trucks, side loaders, flatbeds.
- Cargo handling equipment rental (forklift trucks 3 ton , 7 ton , 16 ton , 45 ton reach stacker )
- Well trained and certified drivers and equipment operators.
- Certified to handle and transport dangerous goods.





## Mitsui OSK Liners (MOL)

- MOL has the world's largest ocean shipping fleet.
- Operates specialised bulk carriers for iron ore, coal, and woodchips; tankers for crude oil and LNG; car carriers; cruise ships; ferries and coastal liners; and containerships.
- Shipping service between Southern Africa, Far East, Middle East, Australia, Europe and the Americas.



## O.N.E

- New shipping service formed in 2018 between MOL, K-LINE and NYK.
- More than 250 vessels and representation in more 100 countries.
- Shipping service worldwide for any commodity.

TEL | +264 64 201 2356  
 EMAIL | [contact@ols.com.na](mailto:contact@ols.com.na)  
 WEBSITE | [www.molpower.com](http://www.molpower.com)  
[www.one-line.com](http://www.one-line.com)





TEL +264 64 281 200  
 EMAIL [namibia@monjasa.com](mailto:namibia@monjasa.com)  
 WEBSITE [www.monjasa.com](http://www.monjasa.com)

## Monjasa Namibia

- Dedicated offshore bunkering service along Namibian coast.
- ISO 8217 certified fuel blends.
- 30 vessels worldwide, offices in most major ports world wide and supplies some 5 million tonnes of fuel per annum.



**Orca Marine Services**

TEL +264 64 281 209  
 EMAIL [info@orcamarine.com.na](mailto:info@orcamarine.com.na)  
 WEBSITE [www.orcamarine.com.na](http://www.orcamarine.com.na)

## Orca Marine Services

- Dedicated launch service for local maritime industry.
- Crew Transfers
- Fresh supplies (food, water, vegetables, fruit etc).
- Ships spares, oil and lubricants.
- Crane and equipment hire.



TEL +264 64 201 2027  
 EMAIL [contact@wbs.com.na](mailto:contact@wbs.com.na)  
 WEBSITE [www.wbs.com.na](http://www.wbs.com.na)

## Walvis Bay Airport Services

- Airport ground handling support at the Walvis Bay airport for all aircraft types.
- Provides hangar space, mobile sanitary removal and supplies replenishment services to aircraft.
- Advanced ground handling equipment.





## **Manica Group Namibia Head office**

**2 Third Str. Walvis Bay, Namibia**

**P.O Box 4, Walvis Bay, Namibia**

**Tel: +264 64 201 2911**

**Email: [contact@manica.com.na](mailto:contact@manica.com.na)**

**Web: [www.manica.com.na](http://www.manica.com.na)**